



2019 Report

The Collaborative Report serves:

- ✓ **35** Hospitals
- ✓ **25** Counties
- ✓ **28** Local Health Departments
- ✓ **3** States

Hospitals

The Christ Hospital Health Network
 Cincinnati Children's Hospital Medical Center
 Clinton Memorial Hospital
 Highpoint Health
 Kettering Health Network
 Fort Hamilton Hospital
 Grandview Medical Center
 Greene Memorial Hospital
 Kettering Behavioral Medic Center
 Kettering Medical Center
 Soin Medical Center
 Southview Medical Center
 Sycamore Medical Center
 Lindner Center of HOPE
 Mercy Health | Cincinnati Region
 Mercy Health - Anderson Hospital
 Mercy Health - Clermont Hospital
 Mercy Health - Fairfield Hospital
 Mercy Health - West Hospital
 The Jewish Hospital – Mercy Health

Mercy Health | Springfield Region
 Mercy Health - Urbana Hospital
 Springfield Regional Medical Center
 Premier Health
 Atrium Medical Center
 Miami Valley Hospital
 Miami Valley Hospital North
 Miami Valley Hospital South
 Upper Valley Medical Center
 TriHealth
 Bethesda Butler Hospital
 Bethesda North Hospital
 Good Samaritan Hospital
 McCullough Hyde Memorial Hospital
 TriHealth Evendale Hospital
 UC Health
 Daniel Drake Center for Post-Acute Care
 University of Cincinnati Medical Center
 West Chester Hospital
 Wayne HealthCare
 Wilson Health

HAMILTON COUNTY, OHIO

Hamilton County is the most populated County in the region and is home to the largest city, Cincinnati. The County continues to struggle with higher than average rates of poverty, infant mortality, homicide, and sexually transmitted diseases. Community collaborations are addressing infant mortality and the heroin epidemic. There is an above average number of children living in the County and a high number of children living in poverty. Hamilton County is one of the 8 counties with an increase in unacceptable ozone levels, from 5 days to 12 days. Of the County's 51 ZIP Codes, 27 have elevated CNI Scores, indicating the likelihood of health disparities. In addition to the community meeting at the Urban League, the Cincinnati Health Department hosted 3 additional community meetings, and the CHNA team conducted an additional meeting around LGBTQ+ issues (summarized in the Urban Health chapter). Hamilton County Public Health contributed 666 resident surveys as part of its WeTHRIVE! initiative. These residents lived outside the City of Cincinnati but within Hamilton County.

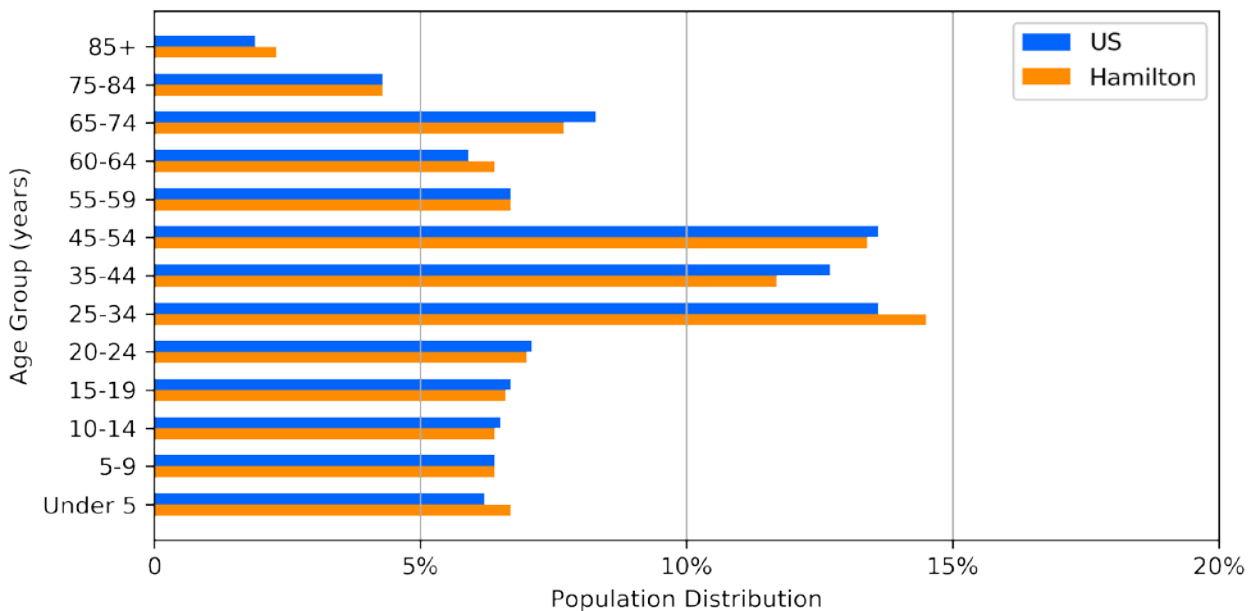
// You can't get fresh produce, but you can get all the alcohol you want. //

- Hamilton County consumer

Population Chart

The following is a population chart for Hamilton County from years 2012-2016.

FIGURE 44. HAMILTON COUNTY POPULATION



Consensus on Priorities

For Hamilton County, the consultants had input from 4 health departments and WeTHRIVE! survey respondents as well as the meetings, consumer surveys, and agency surveys. Substance abuse, specifically addiction, was on each group’s list of priorities, and it was in top place for each source except the meeting attendees. Mental health was a shared priority at the meeting, on consumer surveys, and with health departments. Access to care was the next highest shared priority for every group, except the WeTHRIVE! respondents. Transportation was a major topic at the meeting. Chronic disease was a top-ranked priority for health departments and on consumer and agency surveys. Social Determinants of Health were discussed broadly at the meeting and echoed on the agency surveys. Some sub-categories of SDHs attracted so many votes at the meeting, that they are listed separately, such as Poverty and Discrimination. The health of infants concerned both agencies and health departments. Access, availability, and affordability of healthy food and nutrition information were mentioned on consumer surveys and at the meeting. The discussion included the topics of food insecurity and food deserts.

Top Causes of Death

The top causes of death for 2016 were, in descending order:

- Lung cancer
- Atherosclerotic heart disease
- Dementia, unspecified
- Accidental poisoning by and exposure to narcotics and hallucinogens, not elsewhere classified
- Alzheimer's disease

Priorities from Community Meeting on June 12, 2018

Twenty-seven people contributed votes to identify a total of 44 priorities. Below are the topics receiving the most votes.

TABLE 98. HAMILTON COUNTY: MEETING PRIORITIES

Priority	# Votes	% Votes
Social Determinants of Health (Education/Literacy = 9, Housing = 8, Environment = 6, Employment = 5), not including Poverty or Discrimination	37	18.4%
Mental Health (ACEs = 6, Suicide = 2)	26	12.9%
Access (Transportation = 15)	25	12.4%
Healthy Food/Nutrition	16	8.0%
Discrimination (Racism=6)	14	7.0%
Health education/Promotion	12	6.0%
Poverty	11	5.5%
Substance abuse	8	4.0%

Survey Responses

Below are the most frequent responses from individual consumers, living in Hamilton County, who completed a survey 5/14/18 and 8/3/18. 434 people participated. Respondents all answered the question, “Given the health issues facing the community, which ones would be your top priorities?” They mentioned 68 health and/or health-related issues of particular concern to them. The following table contains the issues that received more than 5% of all mentions.

TABLE 99. HAMILTON COUNTY: CONSUMER PRIORITIES

Priority	# Mentions	% Mentions
Substance abuse	72	19.94%
Chronic disease	69	19.11%
Access to care	44	12.19%
Mental health	32	8.86%
Healthy behaviors	22	6.09%
Healthy food/Nutrition	20	5.54%

Hamilton County Public Health shared resident responses from its WeTHRIVE! survey. There were 666 responses of which 558 expressed a health or health-related concern. (Not included were concerns about code enforcement, general civic matters, private property complaints, general public services, or staffing.)

TABLE 100. HAMILTON COUNTY: WETHRIVE! RESULTS

Priority	# Mentions	% Mentions
Drugs	202	16%
Crime	147	12%
Recreation activities	108	9%
Care for children	102	8%
Public safety	91	7%
Traffic & sidewalks (with focus on safety)	74	6%

Thirty-four organizations serving County residents, especially vulnerable populations, responded with their priorities. The priorities that received more than 5% of mentions are listed below.

TABLE 101. HAMILTON COUNTY: AGENCY PRIORITIES

Priority	# Mentions	% Mentions
Substance abuse	17	21%
Chronic disease	14	17%
Social Determinants of Health	10	12%
Infant mortality	9	11%
Access to care	8	10%

Responses from Health Departments

There were 4 categories where these 4 health departments agreed. The largest area of agreement was Addiction. The next 4 were prioritized by 2 health departments: Mental health; Maternal, infant & child health and/or Infant mortality; Chronic disease and/or Obesity; and Access to care (healthcare in general for Springdale and oral health for Hamilton County.)

TABLE 102. HAMILTON COUNTY: HEALTH DEPARTMENT PRIORITIES

	Addiction	Mental health	Mat., infant & child health/Infant mortality	Chronic disease/Obesity	Access to care
Hamilton County	1	1	1	1	1
City of Cincinnati	1	1	1	1	
City of Norwood	1				
City of Springdale	1				1

// Systems not speaking to each other end up sending people from here to there to here to there. //

- Hamilton County consumer

Note:

There is a separate snapshot for the City of Cincinnati in the Urban Health chapter.

Hamilton County Health Snapshot

Pop.: 805,965

Measure/Indicator	County	Trend	State	U.S.
Health Outcomes				
Cancer mortality, Breast (rate per 100,000)	24.4	*	22.2	20.2
Cancer mortality, Lung (rate per 100,000)	50.6	-*	48.2	39.4
Cancer mortality, Overall (rate per 100,000)	179.1	-*	174.3	157.1
Cancer mortality, Colon & Rectum (rate per 100,000)	17.3	-*	15.5	14.0
Child mortality (rate per 100,000, 1-17 yrs.)	23.7	*	20.1	19.9
Chronic Lower Respiratory Disease (CLRD) deaths age 65 and up (rate per 100,000)	271.8	-	316.1	270.9
Diabetes (%)	12.1	*	11.1	10.7
Heart Disease Deaths (rate per 100,000)	174.1	-	188.4	167
Infant Mortality (rate per 1,000 live births)	9.0	*	7.2	5.9
Injury Deaths (rate per 100,000)	63.8	-*	61.2	45.3
Low birthweight (%)	9.4	*	8.5	8.2
Preterm Birth (%)	10.7	*	10.3	9.6
Stroke Deaths (rate per 100,000)	49.3	*	40.6	37.5
Health Behaviors				
Adult Obesity (%)	29.1	-	30.6	29.2
Adult Smoking (%)	22.9	*	22.0	16.5
Adults with high blood pressure (% Yes)	34.3	*	33.9	32.0
Alcohol-impaired driving deaths (%)	38.0	-*	34.0	30.0
Chlamydia incidence (rate per 100,000)	858.1	-*	521.6	497.3
Gonorrhea incidence (%)	355.5	-*	176.8	145.8
HIV prevalence (rate per 100,000)	369.1	-*	199.5	305.2
Homicide (rate per 100,000)	9.8	*	5.9	5.5
Motor vehicle crash deaths (rate per 100,000)	7.1	-	10.3	11.5
Physical inactivity (%)	24.5	-	26.4	25.2
Substance Abuse/Mental Health				
Depression (%)	18.5	-	18.5	17.1
Drug poisoning deaths (rate per 100,000)	35.5	-*	26.2	14.6
Fentanyl & related drug OD deaths (rate per 100,000)	15.0	-*	9.0	2.6
Heroin poisoning overdose deaths (rate per 100,000)	21.4	-*	10.9	3.5
Prescription opioid overdose deaths (rate per 100,000)	7.4	*	5.9	4.0
Suicide (rate per 100,000)	12.6	-	13.3	13.0
Access to Clinical Care				
Dentists (ratio)	1380:1	-	1656:1	1480:1
Mammography screening (%)	67.5	-	68.4	65.5
Mental health providers (ratio)	415:1	↓	561:1	470:1
Primary care physicians (ratio)	920:1	↓	1307:1	1320:1
Uninsured (%)	7.9	-	7.6	11.8
Socio-Economic/Demographic				
Children in poverty (%)	26.1	*	22.1	21.2
Hispanic (%)	2.9		3.5	17.3
African American (%)	25.7		12.1	12.3
Population that is 65 and older (%)	14.2		23.0	22.3
Population below 18 years of age (%)	23.3	*	14.5	16.0

* = Higher than state and national rates. Source data range: 2014-2017. U = Unavailable or unreliable data

Top Causes of Death

Lung Cancer
Heart Disease
Dementia

Injury Deaths

Rate is rising and higher than OH and US rates

Drug ODs

Deaths rising and higher than OH and US for drug poisoning, heroin & Fentanyl

STIs

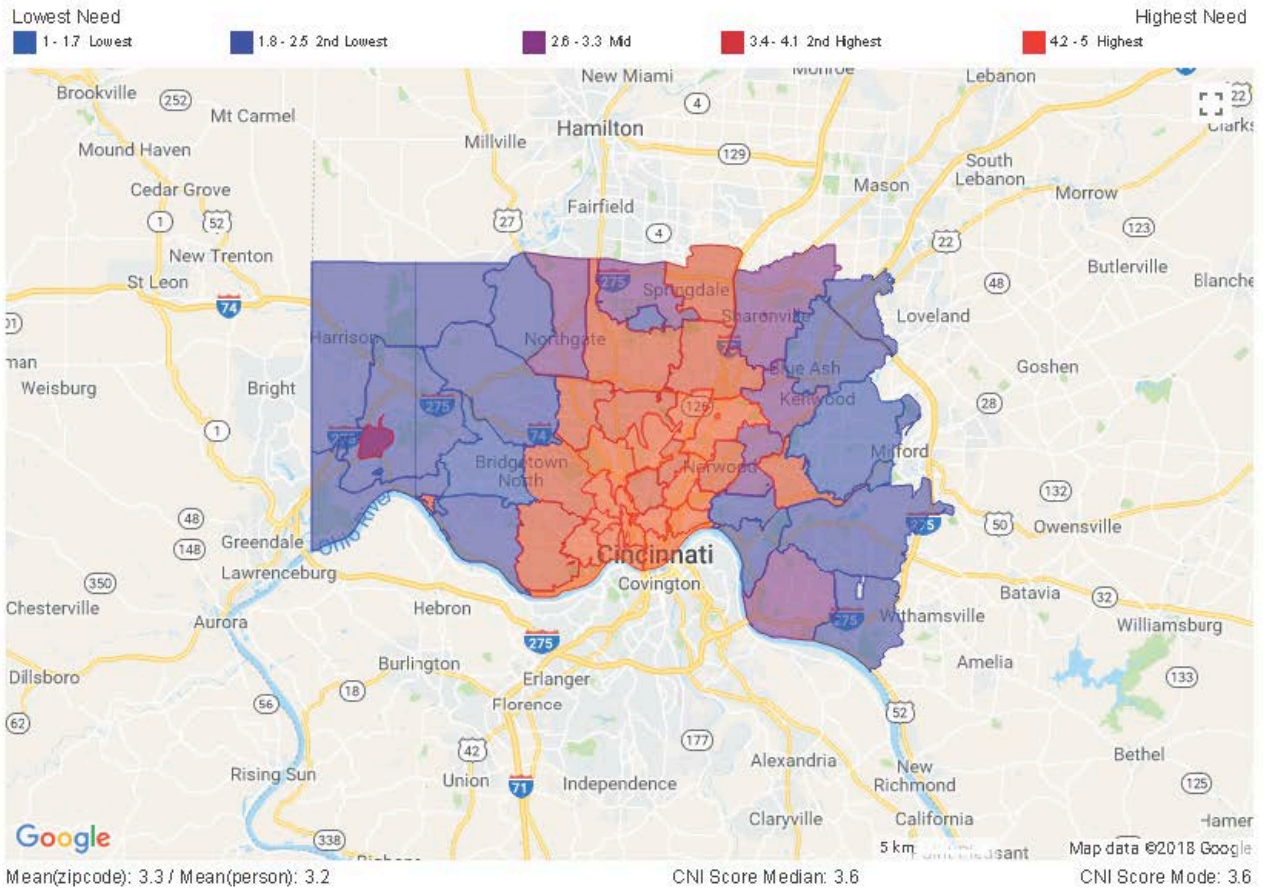
Rising rates of chlamydia, gonorrhea & HIV and > OH & US

Children

Large population under 18 and high percentage living in poverty

Community Need Index

A high CNI score (3.4 to 5.0) is an indicator for socioeconomic variation, barriers to care, and an increased need for health care services. More than half, or 27, of Hamilton County's 51 ZIP Codes have high scores.



Zip Code	CNI Score	Population	City	County	State
45001	3.6	777	Addyston	Hamilton	Ohio
45002	2	14448	Cleves	Hamilton	Ohio
45030	1.8	18831	Harrison	Hamilton	Ohio
45033	3.6	430	Hooven	Hamilton	Ohio
45052	2	4229	North Bend	Hamilton	Ohio
45111	2.2	380	Camp Dennison	Hamilton	Ohio
45174	1	2235	Terrace Park	Hamilton	Ohio
45202	4.2	17062	Cincinnati	Hamilton	Ohio
45203	4.8	2381	Cincinnati	Hamilton	Ohio
45204	4.6	6930	Cincinnati	Hamilton	Ohio
45205	4.8	18858	Cincinnati	Hamilton	Ohio
45206	4.6	10679	Cincinnati	Hamilton	Ohio
45207	4.8	7939	Cincinnati	Hamilton	Ohio
45208	2.4	17880	Cincinnati	Hamilton	Ohio
45209	3	9501	Cincinnati	Hamilton	Ohio
45211	4	36531	Cincinnati	Hamilton	Ohio
45212	3.8	21851	Cincinnati	Hamilton	Ohio
45213	3.2	11817	Cincinnati	Hamilton	Ohio
45214	5	8840	Cincinnati	Hamilton	Ohio
45215	3.6	29399	Cincinnati	Hamilton	Ohio
45216	4.4	9831	Cincinnati	Hamilton	Ohio

45217	4	6557	Cincinnati	Hamilton	Ohio
45218	2.4	3798	Cincinnati	Hamilton	Ohio
45219	4.2	16953	Cincinnati	Hamilton	Ohio
45220	3.6	14964	Cincinnati	Hamilton	Ohio
45223	4.6	12272	Cincinnati	Hamilton	Ohio
45224	4	19077	Cincinnati	Hamilton	Ohio
45225	5	9009	Cincinnati	Hamilton	Ohio
45226	2.4	5992	Cincinnati	Hamilton	Ohio
45227	3.6	18323	Cincinnati	Hamilton	Ohio
45229	4.8	13148	Cincinnati	Hamilton	Ohio
45230	2.6	27983	Cincinnati	Hamilton	Ohio
45231	3.4	42342	Cincinnati	Hamilton	Ohio
45232	4.8	7224	Cincinnati	Hamilton	Ohio
45233	1.8	16148	Cincinnati	Hamilton	Ohio
45236	2.8	24701	Cincinnati	Hamilton	Ohio
45237	4.2	20257	Cincinnati	Hamilton	Ohio
45238	3.6	45806	Cincinnati	Hamilton	Ohio
45239	3.8	27846	Cincinnati	Hamilton	Ohio
45240	3.2	27005	Cincinnati	Hamilton	Ohio
45241	2.6	23303	Cincinnati	Hamilton	Ohio
45242	2	21359	Cincinnati	Hamilton	Ohio
45243	1.4	14178	Cincinnati	Hamilton	Ohio
45244	1.8	28668	Cincinnati	Hamilton	Ohio
45246	3.6	15515	Cincinnati	Hamilton	Ohio
45247	2	22981	Cincinnati	Hamilton	Ohio
45248	1.4	25433	Cincinnati	Hamilton	Ohio
45249	2.4	13576	Cincinnati	Hamilton	Ohio
45251	2.8	21862	Cincinnati	Hamilton	Ohio
45252	1.8	4656	Cincinnati	Hamilton	Ohio
45255	2.2	21660	Cincinnati	Hamilton	Ohio